





						
clamp & cord 350	afil 351	aven 351	arip 351	achi 351	tape 352	glue 353

			
showroom 354	showroom 354	showroom 355	showroom 355

## accessories

### accessori e showroom

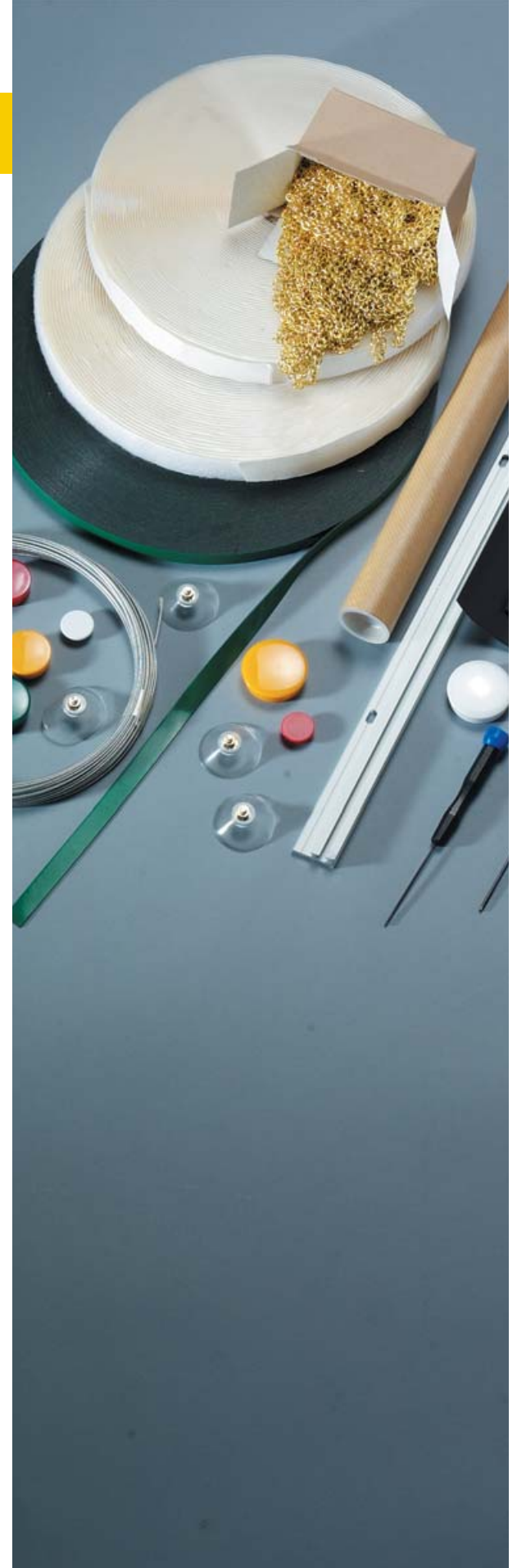
accessori per ogni situazione: da materiali per il montaggio a speciali adesivi, da calamite e fogli magnetici a velcro e occhielli, fino ad una grande varietà di campionature per lo showroom e la forza vendite.

### zubehör & showroom

zubehör für alle lebenslagen: von montagematerial über spezialkleber bis hin zu magneten und klettbandern, sowie diverse musterartikel für ihre präsentation in showroom und aussendienst.

### accessories & showroom

accessories for all situations: from mounting material over special adhesives up to magnets and velcro, and a variety of sample displays for your showroom and sales representatives.





ACORD0450WE cord 50m



ACL3540WE clamp 20pcs

# FISSO clamp & cord



**IT clamp, gancio istantaneo riutilizzabile, brevettato.** per banner, tende e tendoni, bandiere e striscioni. facile da usare e da agganciare senza l'utilizzo di attrezzi, non occorre forare i tessuti. se fissato correttamente, clamp ha una tenuta di 60kg al pezzo. materiale: plastica bianca. spessore del materiale: max. 1,5mm.

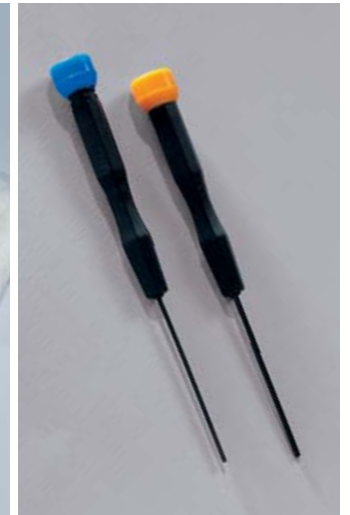
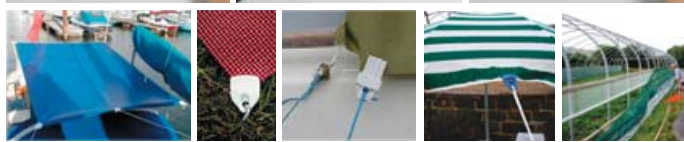
**cord, robusta fune per banner.** fune intrecciata con anima rinforzata, resistente ai raggi uv e alle intemperie. materiale: poliestere bianco. spessore: Ø4mm.

**DE clamp, patentierte bannerklemme.** für banner, planen, zelte, vorhänge, stoffe und fahnen. ohne öse, ohne loch, ohne werkzeug, einfach auf zug einklemmen. ordnungsgemäss befestigt, hält ein clamp 60kg. materiale: kunststoff, weiss. materialestärke: max. 1,5mm.

**cord, robustes halteseil.** geflochten mit resistantem kern, uv-beständig, wetterfest. materiale: polyester, weiss. stärke: Ø4mm.

**EN clamp, patented for banners.** for banner, tents, curtains, flags and drapes. no eyelet, no hole, no tools. the harder the tug, the greater the grip. correctly mounted one piece of clamp holds 60kg. materiale: synthetics, white. materiale thickness: max. 1,5mm.

**cord, robust holding rope.** plaited, with sturdy core, uv-resistant, weather-proof. materiale: polyester, white. thickness: Ø4mm.

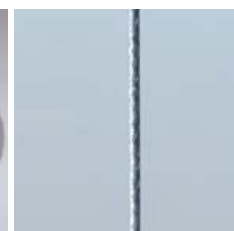


# utensili - nützliches - utilities

**IT cavo d'acciaio rivestito di pvc, Ø1,2mm o Ø1,7mm.** rotoli da 5m, 25m e 500m. per sistemi in tensione con gli articoli delle linee fisso, fly e digi.

**DE stahlseil** pvc beschichtet, Ø1,2mm oder Ø1,7mm in edelstahl. konfektionen zu 5m, 25m und 500m. für seilspannsysteme mit fisso-, fly- oder digi-produkten.

**EN steel cable** pvc coated Ø1,2mm or Ø1,7mm stainless steel. length 5m, 25m and 500m. for suspension systems with fisso-, fly- or digi-products.



Ø1,7mm acciaio | stahl | steel

AFIL05	5m	
AFIL25	25m	
ABOB500	500m	

Ø1,2mm inox | edelstahl stainless steel

AFILX05	5m	
AFILX25	25m	
AFILX500	500m	

**IT ventose trasparenti, Ø40mm con vite da 4mm,** per il fissaggio a vetro o su superfici lisce. in sacchetti di nylon da 10pz AVEN4010, o in confezioni con 10set da 4pz l'uno, AVEN4040.

**DE transparenter saugnapf, Ø40mm mit schraube 4mm,** für befestigung auf glas und anderen glatten flächen. im nylonbeutel mit 10st AVEN4010 oder konfektion mit 10set à 4st AVEN4040.

**EN transparent suction cap, Ø40mm with 4mm screw** for fastening on glass or other smooth surfaces. 10pcs in nylon bag AVEN4010 or box with 10set with 4pcs each AVEN4040.

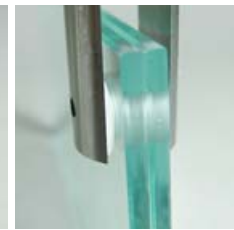


AVEN4010 box 10pcs

**IT anellini proteggi-vetro,** da utilizzare con INFOGLASS, confezionati in buste, con diametro interno Ø8mm o Ø4mm.

**DE glasschutzringe,** für die verwendung mit INFOGLASS. im nylonbeutel mit innendurchmesser Ø8mm oder Ø4mm.

**EN glass protection ring,** to be used with INFOGLASS products. in nylon bags with inner diameter Ø8mm or Ø4mm.



Ø8mm ARIP15/8 box 500pcs

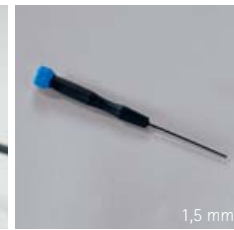
ARIP15/8-100 box 100pcs

Ø4mm ARIP15/4 box 500pcs

**IT chiavi professionali,** con impugnatura blu ACHI15 per brugole da 1,5mm e con impugnatura gialla ACHI20 per brugole da 2mm.

**DE inbussschlüssel schnell und professionell,** mit blauem griff ACHI15 für inbussschrauben 1,5mm, mit gelbem griff ACHI20 für inbussschrauben 2mm.

**EN allen keys quick and professional,** with blue handle ACHI15 for 1,5mm allen screws, with yellow handle ACHI20 for 2mm allen screws.



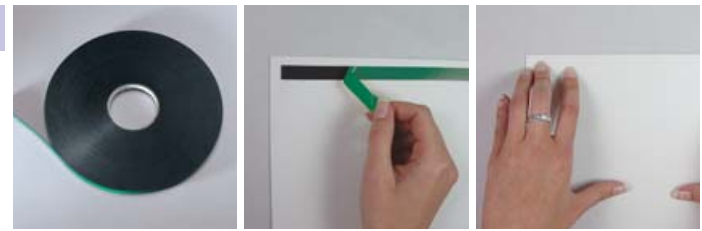
1,5mm ACHI15

2mm ACHI20



## FISSO tape

**ABA1250**  
50m



**IT** biadesivo in rotoli. larghezza: 12mm. rotolo: 50m.  
**DE** doppelklebeband auf rolle. breite: 12mm. rolle: 50m.  
**EN** double adhesive tape. width: 12mm. length: 50m.

trasparente | transparent | transparent  
**ATP444460TR**  
box 40pcs



**IT** biadesivo triangolare per ghost. trasparente e nero. dimensioni: 44x44x60mm.  
**DE** doppelkleber-dreieck für ghost. transparent und schwarz. grösse: 44x44x60mm.

nero | schwarz | black  
**ATP444460SZ**  
box 40pcs

**EN** double adhesive triangular tape for ghost. transparent and black. size: 44x44x60mm.

Ø15mm  
**ATP15TR**  
box 100pcs



**IT** biadesivo rotondo o a strisce. trasparente. strisce: 9mmx100mm, biadesivo rotondo: Ø15mm, Ø25mm.

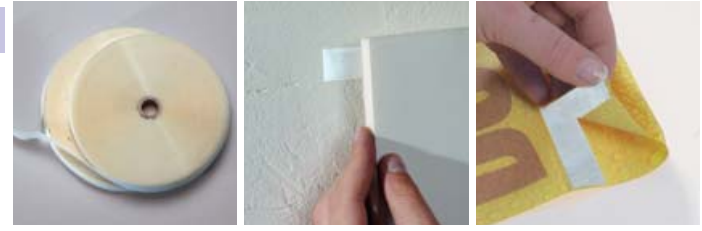
Ø25mm  
**ATP25TR**  
box 100pcs

**DE** doppelkleber, punkte und streifen. transparent. streifen: 9mmx100mm, punkte: Ø15mm, Ø25mm.

9mmx100mm  
**ATP09100TR**  
box 50pcs

**EN** double adhesive tape, round and square. transparent. square: 9mmx100mm, round: Ø15mm, Ø25mm.

**AVE2025**  
25m



**IT** velcro autoadesivo in rotoli. larghezza: 20mm. rotolo: 25m.  
**DE** klettverschluss, selbstklebend, auf rolle. breite: 20mm. rolle: 25m.  
**EN** velcro fastener, self-adhesive, strap. width: 20mm. roll: 25m.



**IT** colla istantanea. incollaggio ultrarapido su metalli, materiale plastico, legno e altri materiali porosi. si raccomanda di utilizzare su superfici pulite e non grasse e di tener premute le due parti fino a che non siano ben unite. flacone: 20ml.

**DE** universeller sekundenkleber. ultraschnelle haftung auf metall, kunststoff, holz und glas. achten sie auf fettfreie, saubere oberfläche und ausreichend anpressdruck bis zum abbinden. fläschchen: 20ml.

**EN** universal superglue. sticks in best time to metal, synthetics, wood and glass. mind surfaces to be clean and free of grease. ensure enough contact pressure till bonded. flask: 20ml.



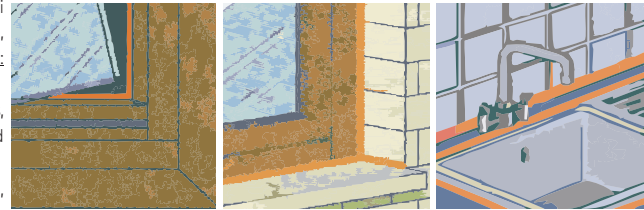
**IT** silicone universale. multiuso, sigillatura e incollaggio di superfici vetrate, ceramica, alluminio. non adatto per specchi, materiali fibrosi e porosi. colore: trasparente. contenuto: 280ml.

**DE** silikon, universal. versiegelung und verkleben von glas, keramik, aluminium. nicht geeignet für spiegel, fasrige und poröse oberflächen. farbe: transparent. inhalt: 280ml.

**EN** silicone, universal. sealing and glueing of glass, ceramic, aluminium. not suitable for mirrors, fibrous or porous surfaces. colour: transparent. content: 280ml.



**AGLUE**  
20ml

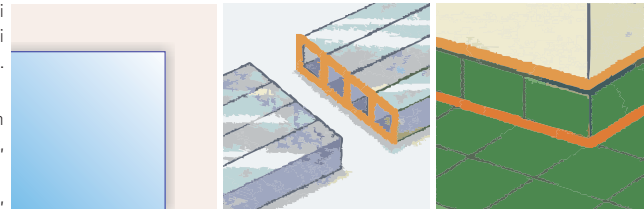


**ASILUNIV**  
280ml

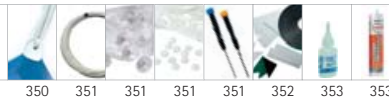
**IT** silicone neutro. sigillatura e incollaggio di superfici vetrate, ceramica, alluminio e metalli in genere, superfici verniciate, legno, policarbonato e pvc. colore: trasparente. contenuto: 310ml.

**DE** silikon, geruchsneutral. versiegelung und verkleben von glas, keramik, aluminium, metall, lackierten oberflächen, holz, polycarbonat und pvc. farbe: transparent. inhalt: 310ml.

**EN** silicone, scentless. sealing and glueing of glass, ceramic, aluminium, metal, coated surfaces, wood, polycarbonate and pvc. colour: transparent. content: 310ml.



**ASILNEUTR**  
310ml



**IT** fissomisto espositore per confezioni blister, 9 ganci per 9 confezioni blister cad., acrilico color ghiaccio. 590x255x230mm (hxlxp).

**DE** fissomisto blister display mit 9 haken für je 9 blister, frostweisses acryl. 590x255x230mm (hxbxt).

**EN** fissomisto blister display with 9 hooks for 9 blister packs each, white frosted acrylic. 590x255x230mm (hxwxd).



MUFM81

**IT** bannerboy espositore telescopico con stampa digitale, bannerblock ed inserto vetro nella base

**DE** bannerboy teleskopdisplay mit bannerblock, bedrucktem banner und glasbasis

**EN** bannerboy telescopic display with bannerblock, digital print and glass base



05PROM07F



accessories



**IT** espositore da banco fissovisto, con campioni della linea fisso, misure 390x170x140mm (hxbxp)

**DE** tischaufsteller fissovisto, mit mustern der fisso-serie, 390x170x140mm (hxbxt)

**EN** counter display fissovisto, with samples of the fisso series 390x170x140mm (hxwxd)



MUDA4

## FISSO showroom



**IT** valigetta campioni, trolley con piu di 100 campioni delle linee fisso e fly. 295x450x440mm.

**DE** musterkofter, trolley mit mehr als 100 mustern der fisso und fly linie. 295x450x440mm.

**EN** sample case, trolley with more than 100 samples of the fisso and fly assortment. 295x450x440mm.



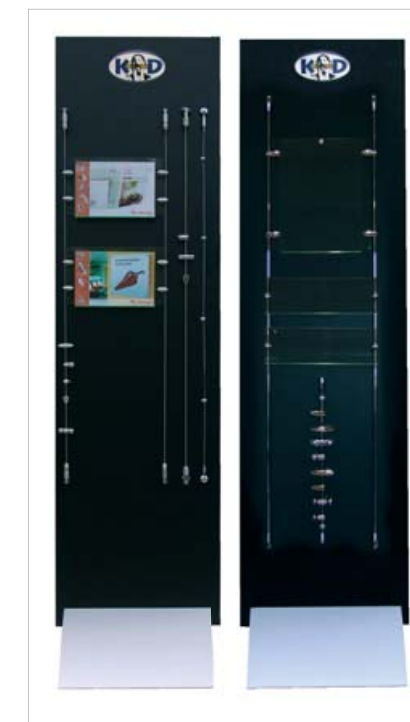
MUK07



fisso&fly MUP5FY



fisso wall MUP1FWALL



fly MUP6Y

**IT** pannello espositivo con fissaggi fisso e fly. espositore da pavimento con ca. 100 fissaggi delle linee fisso e fly. pannello mdf nero su base pressto. 1715x450x345 (hxbxp)

**DE** showroom paneel mit fisso und fly. freistehende musterwand mit repräsentativer auswahl von ca. 100 fisso- und fly-befestigungen. schwarzes mdf-paneel auf pressto basis. 1715x450x345 (hxbxt)

**EN** showroom panel with fisso and fly. freestanding sample panel with representative choice of approx. 100 fisso and fly fixings. black panel on pressto base. 1715x450x345 (hxwxd)

**IT** pannello espositivo con fissaggi fisso a parete. espositore da pavimento con ca. 30 fissaggi della linea fisso a parete. pannello mdf nero su base pressto. 1715x450x345 (hxbxp)

**DE** showroom paneel mit fisso wandbefestigungen. freistehende musterwand mit ca. 30 fisso befestigungen für wand. schwarzes mdf-paneel auf pressto basis. 1715x450x345 (hxbxt)

**EN** showroom panel with fisso wall fixings. freestanding sample panel with approx. 30 fisso fixings for wall. black panel on pressto base. 1715x450x345 (hxwxd)

**IT** pannello espositivo con fissaggi fly. espositore da pavimento con ca. 40 fissaggi della linea fly per cavi ed astine. pannello mdf nero su base pressto. 1715x450x345 (hxbxp)

**DE** showroom paneel mit fly befestigungen. freistehende musterwand mit ca. 40 fly befestigungen für stab und seil. schwarzes mdf-paneel auf pressto basis. 1715x450x345 (hxbxt)

**EN** showroom panel with fly fixings. freestanding sample panel with approx. 40 fly fixings for wall. black panel on pressto base. 1715x450x345 (hxwxd)

**IT** pressto espositore per showroom con pressto 235, tappi laterali e pannello stampato con 2 tasche A4, 925x400x345mm (hxlxp).

**DE** pressto showroomdisplay mit pressto 235, abdeckkappen und bedrucktem paneel mit 2 A4 fächern, 925x400x345mm (hxbxt)

**EN** pressto showroom display with pressto 235, side caps and printed panel with 2 A4 brochure trays, 925x400x345mm (hxwxd)



06PROM07

accessori | zubehör | accessories